

# CHIPPER STOL

## Overview



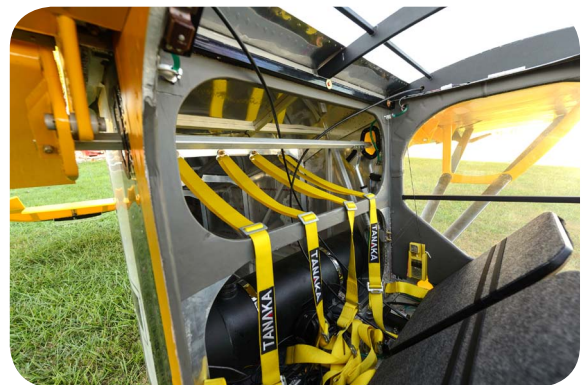
All specifications subject to change without notice.

<b>Wingspan:</b>	31' 2" (9.50 meters)
<b>Length:</b>	18' 6" (5.64 meters)
<b>Empty weight:</b>	625 LBs with Rotax 912
<b>Gross weight:</b>	1232 LBs
<b>Useful load:</b>	600 LBs typical
<b>Cruise:</b>	106mph / 7,500 feet (Cruise Tires) (80 HP)
<b>Vne:</b>	124 mph
<b>Stall speed:</b>	39 mph @ 1050 lbs / 41 mph @ 1232 lbs

<b>Top tested dive speed:</b>	138 mph IAS
<b>Takeoff run:</b>	<400 feet, typically 200 feet
<b>Vy:</b>	51 mph
<b>Vx:</b>	44 mph
<b>Cabin width:</b>	40" butt to butt, 41" shoulder to shoulder
<b>Cabin height:</b>	37" butt to top of head
<b>Wing area:</b>	116.2 square feet
<b>Wing loading:</b>	10.60 pounds per sq foot
<b>Climb rate:</b>	800 FPM (std conditions), sea level
<b>Service ceiling:</b>	>12,000 feet
<b>Range:</b>	Up to 1,000 miles (no reserve)
<b>Fuel capacity:</b>	34 gallons
<b>Baggage:</b>	120 LBs MAX

### Target Engines:

- ULPower
- Jabiru
- Rotax



CHIPPER AEROSPACE LLC

[www.chipper.aero](http://www.chipper.aero)

(316) 253-6746

[info@beliteaircraft.com](mailto:info@beliteaircraft.com)